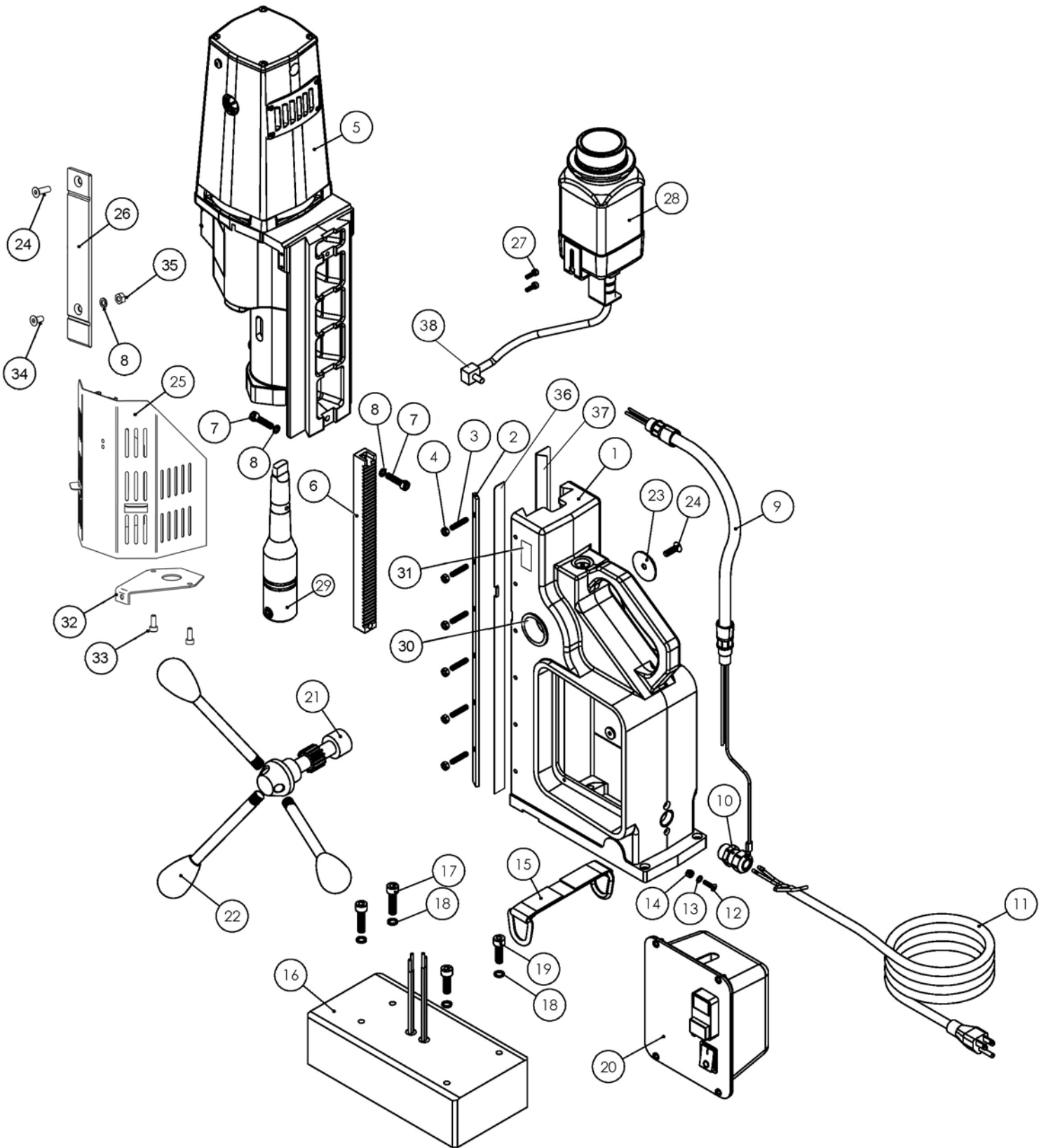


MACHINE BREAKDOWN



Rev. C

MACHINE PARTS LIST

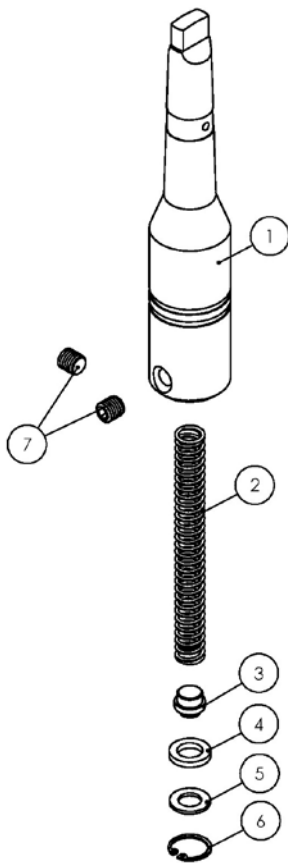
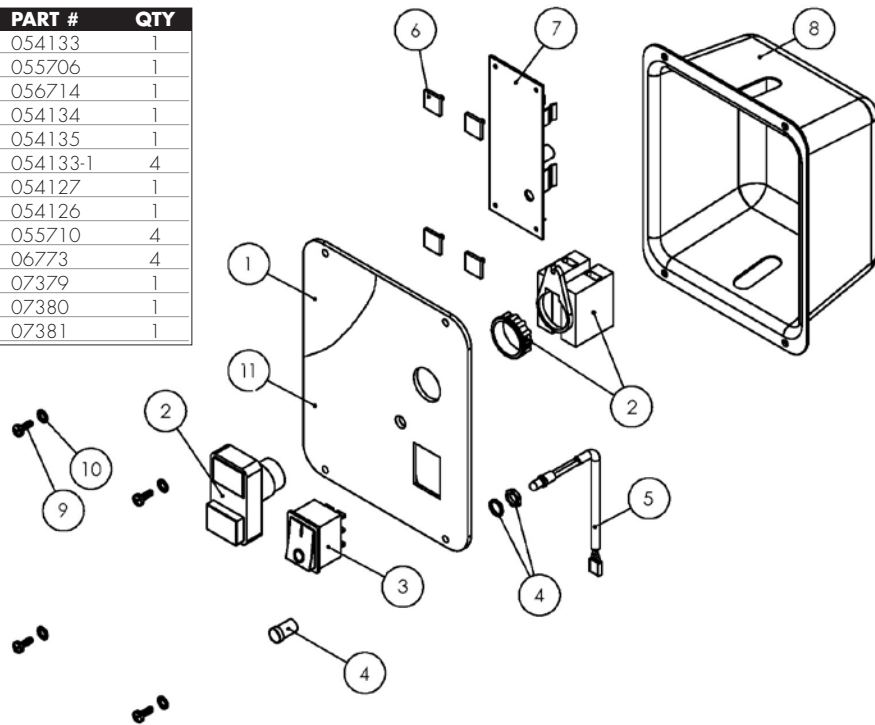
ITEM	DESCRIPTION	PART #	QTY
1	FRAME, 4X4	07305	1
2	PRESSURE PLATE	07304	1
3	M5 - .8 X 25MM FLAT POINT SSS	07020	6
4	NUT, M5 - .8	0151181	6
5	MOTOR ASSEMBLY 120V	054001	1
6	GEAR RACK, 4X4	07323	1
7	SHCS, M6 - 1 X 25MM	0070538	2
8	WASHER, SPLIT M6	07016	3
9	MOTOR CORD	07420	1
10	STRAIN RELIEF	0151064	1
11	CORD, POWER 16-3 SEO 10'	0012180	1
12	SCR, FHSCS M4 - .7 X 16MM	07116	1
13	WASHER, INTERNAL M4	04576	1
14	NUT, M4 - .7	0070133	1
15	D-RING STRAP	06797	1
16	MAGNET ASSY, 4X4	07316	1
17	SHCS, M8 - 1.25 X 25MM	07318	2
18	WASHER, SPLIT M8	07317	4
19	SHCS, M8 - 1.25 X 30MM	07315	2
20	CONTROL PANEL ASSEMBLY	07310P	1
21	PINION HUB, 4X4	07320	1
22	SPOKE HANDLE, 4X4	07319	3
23	HUB WASHER	07306	1
24	SCR, FHSCS M6 - 1 X 20MM	07007	2
25	CUTTER SHIELD	07345	1
26	SLIDE	07346	1
27	SCR, SHCS M4 - .7 X 12MM DIN912	06770	2
28*	COOLANT BOTTLE ASSY	0151511	1
29	ARBOR ASSY, 3MT	07324	1
30	SLEEVE, SELF LUBRICATING	07375	2
31	LABEL GIB ADJUSTMENT	07376	1
32	BACK REST	07377	1
33	SCR, SHCS M6 X 16	0070536	2
34	SCR, FHSCS M6 X 16	07378	1
35	NUT, M6	BM113	1
36	SLIDE INSERT STRIP, LEFT (NEW)	054160	1
37	SLIDE INSERT RIGHT (NEW)	054162	1
38*	CONNECTOR, COOLANT BOTTLE	07327	1

* Part 0151513 includes both item 28 & 38.

Rev. C

CONTROL PANEL AND ARBOR ASSEMBLY PARTS LIST

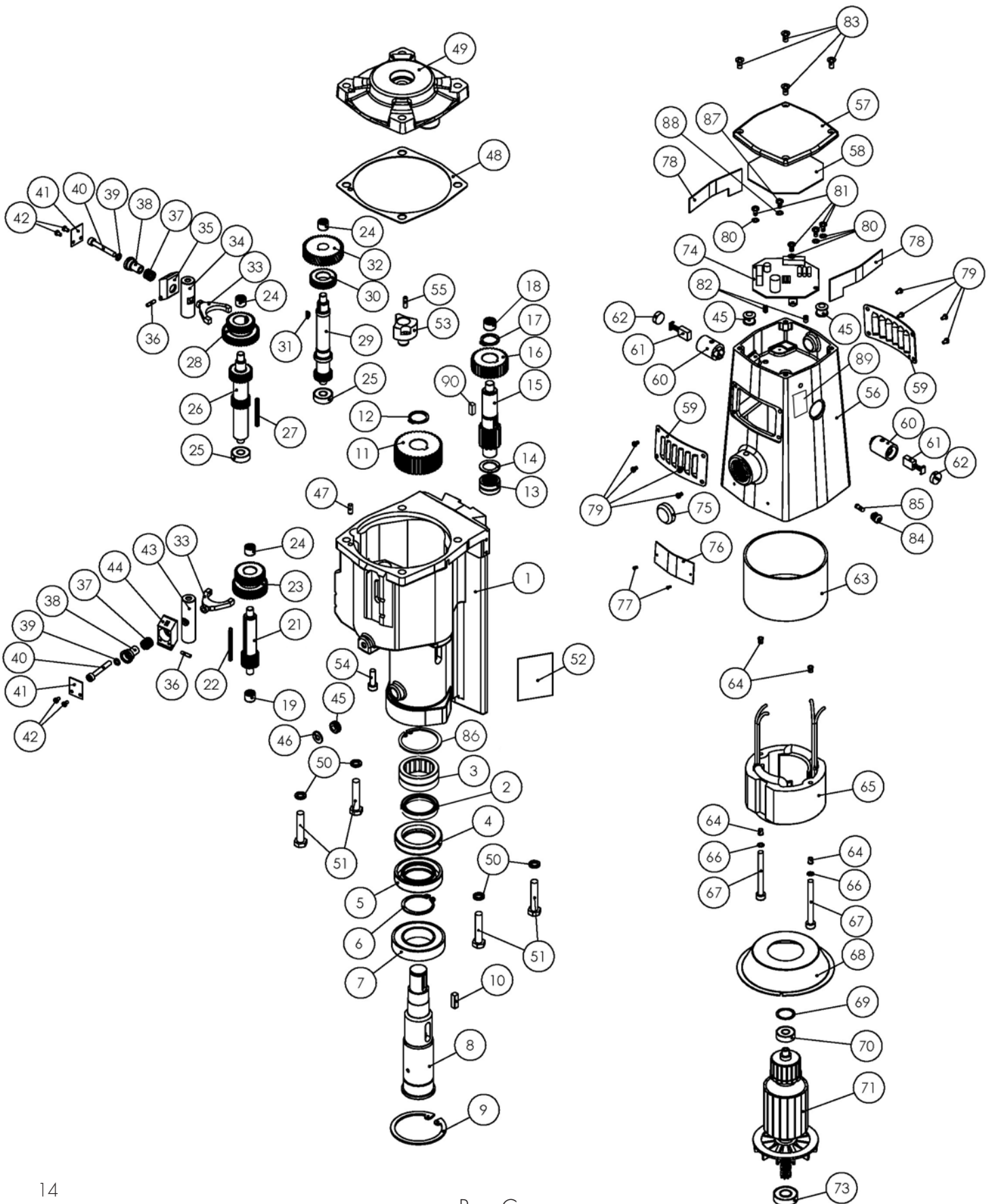
ITEM	DESCRIPTION	PART #	QTY
1	PANEL PLATE	054133	1
2	MOTOR SWITCH	055706	1
3	MAGNET SWITCH	056714	1
4	LED SOCKET ASSEMBLY	054134	1
5	LED INDICATOR ASSEMBLY	054135	1
6	ADHESIVE LOCKING PCB SUPPORT	054133-1	4
7	CIRCUIT BOARD	054127	1
8	ENCLOSURE	054126	1
9	SCR, CRPHMS M4 X 10 DIN 7985A	055710	4
10	WASHER, EXTERNAL M4 DIN6798	06773	4
11	LABEL, PANEL PLATE	07379	1
12	WIRE GROUP 2 (NOT SHOWN)	07380	1
13	WIRE GROUP 3 (NOT SHOWN)	07381	1



ITEM	DESCRIPTION	PART #	QTY
1	ARBOR, 3MT	07331	1
2	SPRING, 3MT ARBOR	07332	1
3	PLUNGER	07333	1
4	WASHER, RUBBER	07334	1
5	WASHER, STEEL	07335	1
6	RETAINING RING, INTERNAL HO-75	0215067	1
7	SSS M10 - 1.5 X 10MM FLAT POINT DIN913	07336	2

Rev. C

MOTOR ASSEMBLY



MOTOR ASSEMBLY PARTS LIST

ITEM	DESCRIPTION	PART #	QTY
1*	GEARCASE	07458	1
2	SEAL, LIP 24 X 40 X 7	07367	1
3	BEARING, BALL 6250 ZZ SHIELDED	07366	1
4	SEAL, LIP 35 X 55 X 10	04807	1
5	SEAL, LIP 35 X 56 X 12	04805	1
6	RETAINING RING, EXTERNAL 35Z	07373	1
7	BEARING, BALL 6007 ZZ SHIELDED	07466	1
8	SPINDLE	07368	1
9	RETAINING RING, INTERNAL 62W	04801	1
10	KEY, SQUARE 6 X 6 X 18	07467	1
11	GEAR 36T	07448	1
12	RETAINING RING, EXTERNAL 20Z	07447	1
13	BERING, NEEDLE RNA 4901	07425	1
14	WASHER, THRUST	07426	1
15	GEARSHAFT 14T	07427	1
16	GEAR 33T	07428	1
17	RETAINING RING, EXTERNAL 18Z	07429	1
18	BEARING, NEEDLE RHNA 101410	07430	1
19	BEARING, NEEDLE RHNA 081512	07431	1
21	SHAFT, PINION 14T	07439	1
22	KEY, SQUARE 3 X 3 X 45	07438	1
23	GEAR, DUAL 33T / 39T	07440	1
24	BEARING, NEEDLE RHNA 081210	07151	3
25	BEARING, BALL 608 SEALED	04544	2
26	SHAFT, PINION 19T / 25T	07432	1
27	KEY, SQUARE 3 X 3 X 38	07433	1
28	GEAR, DUAL 31T / 42T	07434	1
29	GEARSHAFT 18T	07446	1
30	GEAR 29T	07444	1
31	KEY, WOODRUFF #403	04564	1
32	GEAR HELICAL	04582	1
33	SHIFT FORK	07357	2
34	SHIFT PIN, SHORT	07356	1
35	SHIFT LEVER I	07450	1
36	PIN, SPRING	04571	2
37	SPRING, COMPRESSION	04591	2
38	GUIDE, SHIFT LEVER	04524	2
39	WASHER, INTERNAL M5	04563	2
40	SCR, SHCS M5 X 35MM	04572	2
41	TAG, SHIFT	04514	2
42	SCR, CRPHMS M3 X 5MM	045793	4
43	SHIFT PIN, LONG	07343	1
44	SHIFT LEVER II	07424	1
45	SNAP BUSHING LA6	07441	3

ITEM	DESCRIPTION	PART #	QTY
46	WASHER	07443	1
47	PIN, DOWEL M5 X 12	06778	1
48	GASKET, GEARCASE	04593	1
49	COVER, GEARCASE	07442	1
50	WASHER, SPLIT M8	07317	4
51	SCR, SHCS M8 X 40MM	07460	4
52	LABEL, SPEED RANGE	07422	1
53	BEARING HOUSING	07445	1
54	SCR, SHCS M6 X 20MM	0014102	1
55	PIN, DOWEL M5 X 12MM	07451	1
56	FIELD CASE 3/4	054074	1
57	FIELD CASE COVER	054061	1
58	LABEL, WIRING DIAGRAM	054062	1
59	INTAKE LOUVER	054070	2
60	BRUSH HOLDER	04551	2
61	MOTOR BRUSH	04549	2
62	BRUSH CAP	04552	2
63	INSULATOR, FIELD SLEEVE	04558	1
64	INSULATOR, SCREW	04557	4
65	FIELD 120V	04633	1
66	WASHER, LOCK EXTERNAL STAR M4	06773	2
67	SCR, SHCS M4 X 60	04562	2
68	COVER, ARMATURE FAN	054079	1
69	WASHER, SPRING	04560	1
70	BEARING, BALL 608 ZZ	04544	1
71	ARMATURE ASSEMBLY 120V	04631	1
73	BEARING, BALL 6001 ZZ	04543	1
74	CIRCUIT BOARD, OVERLOAD	054067	1
75	PIPE HANDLE HOLE PLUG	054011	1
76	MOTOR TAG 120V	054057	1
77	DRIVE SCREW, #2 X 4MM	0070028	2
78	INSULATOR, CIRCUIT BOARD	054012	2
79	SCR, CR THRD CTNG M3 X 10 DIN 7516A	054014	8
80	WASHER, EXTERNAL M4	06773	4
81	SCR, CRPHMS M4 X 8MM	04820	4
82	SCR, SSS M6 X 12	0070526	2
83	SCR, CRMS OVAL CNTRS NK M5 X 16MM	054013	4
84	LED SOCKET	054054	1
85	LED INDICATOR	054085	1
86	INTERNAL RETAINING RING 42W	07369	1
87	SCR, CRPHMS M3 X 8	048072	1
88	WASHER, M3 LOCK	048073	1
89	LABEL, OVERLOAD	07374	1
90	KEY, 5MM X 5MM X 12MM	07435	1

* Note: Order 07459 for complete Gear Case assembly.

ALPHA INDUSTRIAL TOOL & EQUIPMENT
 51 Tamarack Drive
 Thornhill, Ont
 L3T 4 W2
 Canada
 PH. 905-731-1310
 FAX 905-731-1044