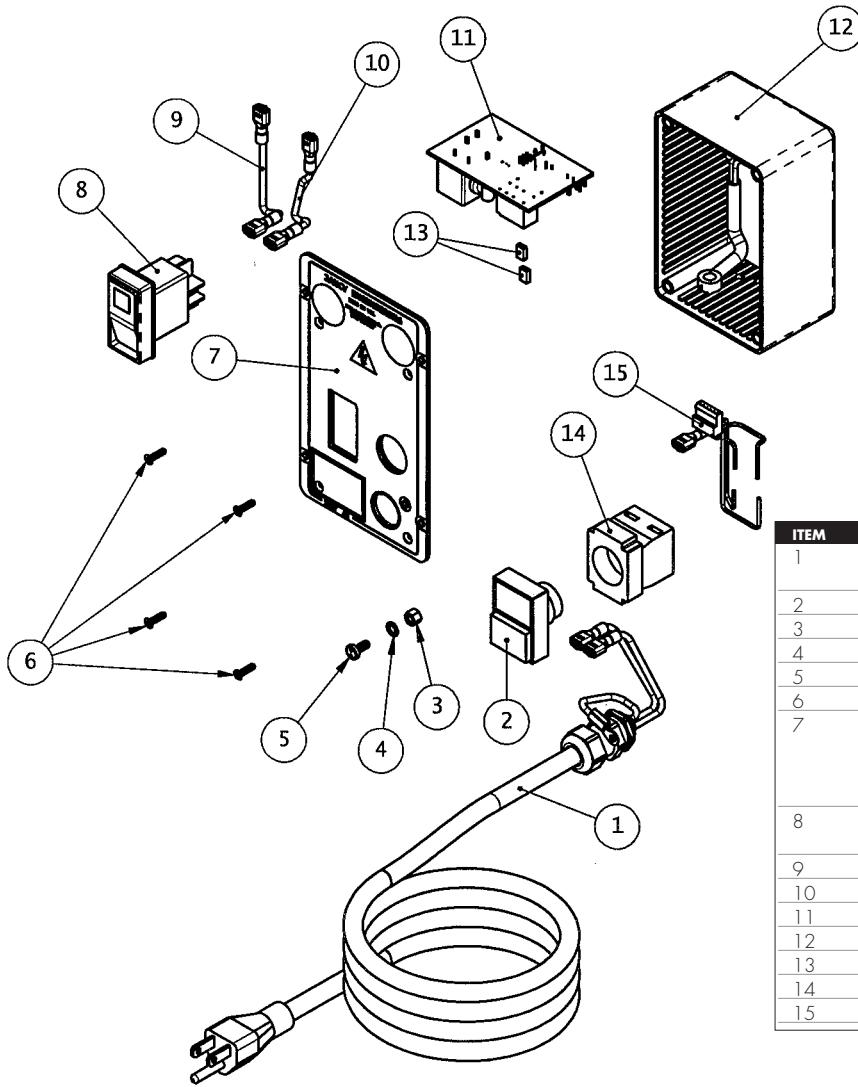
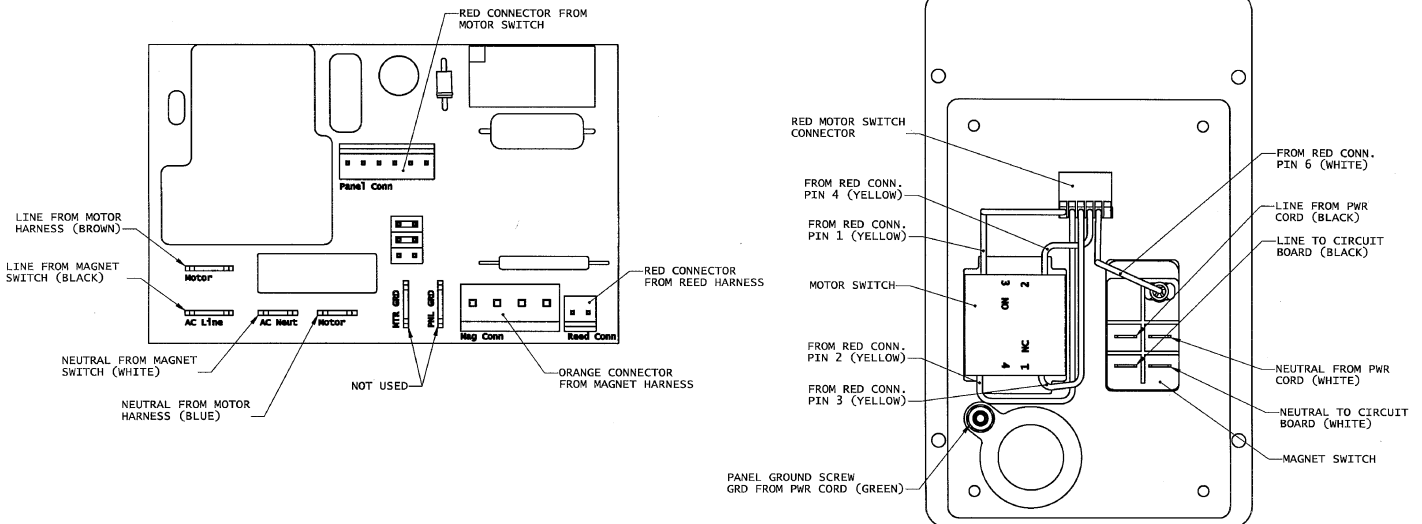


# CONTROL PANEL AND PARTS LIST

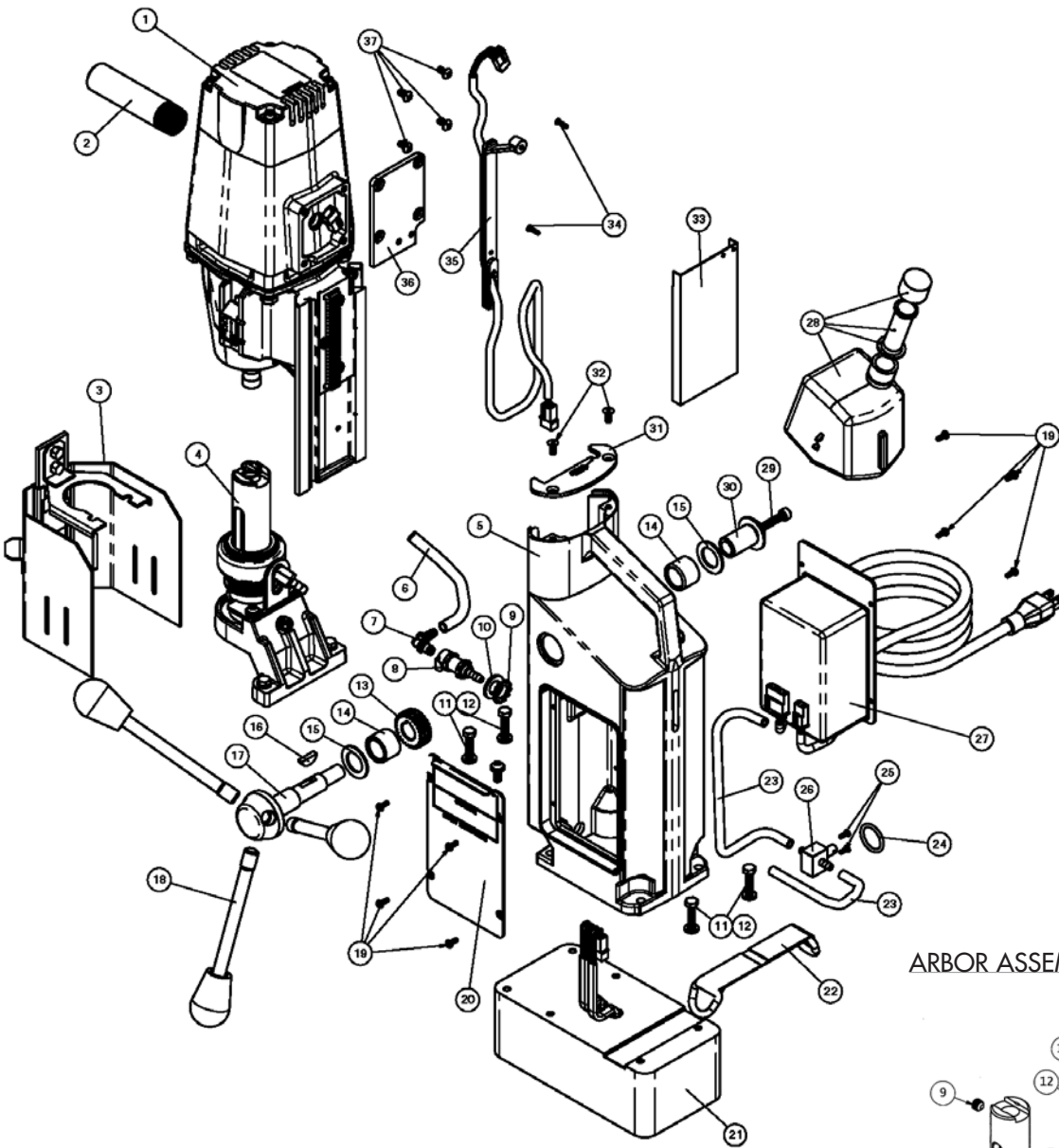


ITEM	DESCRIPTION	PART #	QTY
1	POWER CORD 120V ASSEMBLY	0151550	1
	POWER CORD 240V ASSEMBLY	0151551	1
2	MOTOR ON/OFF SWITCH	0151035A	1
3	NUT, M4-0.7	0070133	1
4	WASHER, INTERNAL M4	04576	1
5	PHMS, M4-0.7 X 10MM SECURITY	0070132	1
6	CRFHMS, M3 0.5 X 12MM	0151184	4
7	PANEL PLATE	0151057J	1
	OVERLAY	0151061	1
	GASKET	0151227	1
	STICKER FOR 240V	080025	1
8	SWITCH, MAGNET 120V	0151045	1
	SWITCH, MAGNET 240V	0151044	1
9	WIRE, LINE	0151552	1
10	WIRE, NEUTRAL	0151554	1
11	CIRCUIT BOARD 120V/240V	04868	1
12	PANEL ENCLOSURE ASSEMBLY	0151051	1
13	PCB SHUNT	06556	2
14	SWITCH CONTACT BLOCK	0151033A	1
15	HARNESS, MOTOR SWITCH	0151558	1

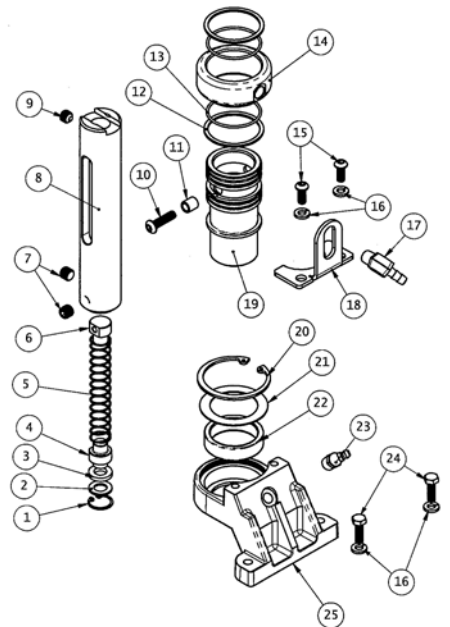
## PANEL WIRING DIAGRAM



# MACHINE AND ARBOR BREAKDOWN



## ARBOR ASSEMBLY



# MACHINE AND ARBOR PARTS LISTS

## MACHINE PARTS LIST

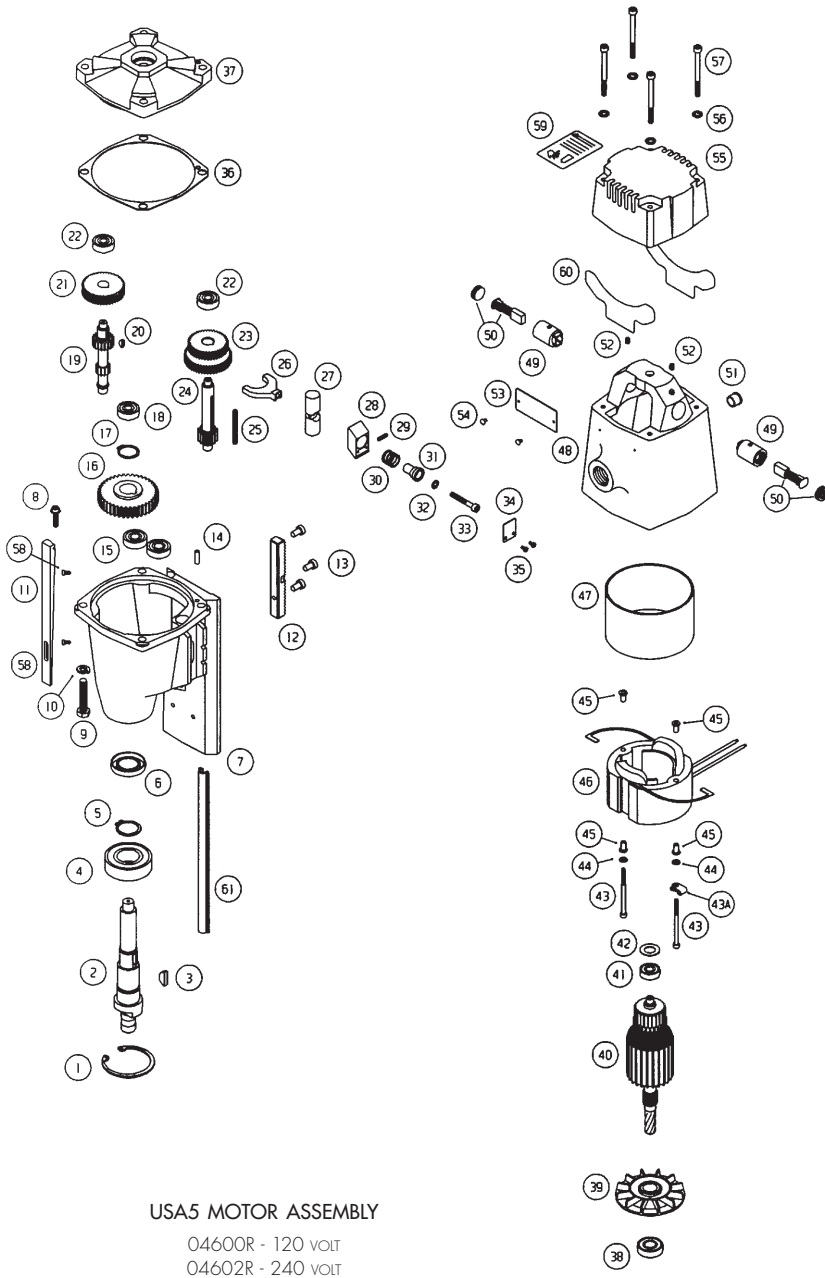
ITEM	DESCRIPTION	PART #	QTY
1	MOTOR 120V ASSEMBLY	04600R	1
	MOTOR 240V ASSEMBLY	04602R	1
2	PIPE HANDLE	0010217	1
3	CHIP GUARD	0151570	1
4	ARBOR ASSEMBLY	0151441	1
5	DRILL FRAME	04700R	1
6	TUBING, 1/4" IN. I.D.	0151263	1
7	COUPLER, QUICK MALE	0070034-N	1
8	COUPLER, QUICK FEMALE BARD	0151271	1
9	WASHER, EXTERNAL LOCK	0151285	1
10	WASHER, NYLON	0151309	1
11	HHCS, M6-1 X 20MM	0151311	4
12	WASHER, SPLIT 1/4"	0070078	4
13	PINION GEAR	0010136	1
14	BEARING, NEEDLE	0151199	2
15	WASHER, THRUST	0151205	2
16	KEY, 606 WOODRUFF	0010142	1
17	SHAFT, PINION HUB	0151193U	1
18	SPOKE, LONG HANDLE	0151333	3
19	CRFHMS, M3.5-0.6 X 10MM SEMS	0070573	8
20	COVER PLATE ASSEMBLY	0151305	1
21	MAGNET ASSEMBLY	0151180	1
22	SAFETY STRAP LINK	06796	1
23	TUBING, 3/16" IN. I.D.	0151164	2
24	RING, SPLIT	0151172	1
25	CRFHMS, 5-40 X 3/8	0151421	2
26	VALVE, COOLANT	0151170	1
27*	CONTROL PANEL ASSEMBLY RM	0151036	1
28	COOLANT BOTTLE ASSEMBLY	0151289	1
	COOLANT BOTTLE	0151163	1
	CAP, COOLANT	0151165	1
	WASHER RUBBER	0151169	1
	STRAINER, COOLANT	0151174	1
29	SHCS, M6-1 X 25MM	0070538	1
30	SLEEVE, PINION SHAFT	0151195	1
31	PLATE, SLIDE COVER	0151113	1
32	CRFHMS, M5-0.8 X 12MM	0151186	2
33	CORD CASE	0151451	1
34	CRFHMS, M3-0.5 X 12MM	0151184	2
35	MOTOR CORD ASSEMBLY	0151448	1
36	COVER, MOTOR	0151111	1
37	BHCS, M5-0.8 X 10MM	04577	4

## ARBOR PARTS LIST

ITEM	DESCRIPTION	PART #	QTY
1	RETAINING RING, INTERNAL	0215067	1
2	WASHER, STEEL	0151385	1
3	WASHER RUBBER	0151387	1
4	PISTON, ARBOR	0151435	1
5	SPRING, ARBOR	0151431	1
6	PLUNGER, ARBOR	0151433	1
7	SSS, 3/8"-24" X 5/16" FLAT POINT	0010187	2
8	ARBOR BODY	0151437	1
9	SSS, 3/8"-24" X 5/16" CUP POINT	0010185	1
10	BHCS, 1/4"-20 X 1"	0018122	1
11	SPACER, PISTON	0151512	1
12	RETAINING RING	0070119	2
13	O-RING	0070079	2
14	INDUCER, COOLANT	0070042	1
15	BHCS, M6-1 X 16MM	0151190	2
16	WASHER, SPLIT 1/4"	0070078	4
17	FITTING, BARB	0151517	1
18	PLATE, RETAINER	0070106	1
19	SLEEVE, ARBOR	0151439	1
20	RETAINING RING, INTERNAL	0151203	1
21	WASHER, THRUST	0151207	1
22	BEARING, NEEDLE	0020114	1
23	FITTING, GREASE	0151229	1
24	HHCS, M6-1 X 20MM	0151311	2
25	SUPPORT BRACKET	0151015	1

\*Specify 120 or 220 volt when ordering control panel.

# MOTOR PARTS LIST



## USA5 MOTOR ASSEMBLY

04600R - 120 volt  
04602R - 240 volt

**ALPHA INDUSTRIAL TOOL & EQUIPMENT**  
51 Tamarack Drive  
Thornhill, Ont  
L3T 4 W2  
Canada  
PH. 905-731-1310  
FAX 905-731-1044

ITEM	DESCRIPTION	PART #	QTY
1	RETAINING RING, INTERNAL	04569	1
2	SPINDLE, MOTOR	04522	1
3	KEY, 606 WOODRUFF	04566	1
4	BEARING, LOWER SPINDLE	04540	1
5	RETAINING RING, EXTERNAL	04568	1
6	SEAL, SPINDLE	04594	1
7	GEARCASE	04530R	1
8	SFHCS, M6-1 X 25	0151505	1
9	HHCS, M8-1.25 X 40	04570	4
10	LOCKWASHER	045790	4
11	SLIDE WEDGE	04511N	1
12	GEAR RACK	04584N	1
13	LSHCS, M6-1 X 10	0070569	3
14	DOWEL PIN 3/16" X 5/8"	04573	1
15	BEARING, LOWER GEARSHAFT	04541	2
16	GEAR, OUTPUT	04581	1
17	RETAINING RING, EXTERNAL	04567	1
18	BEARING, UPPER SPINDLE	04542	1
19	GEARSHAFT, INPUT PINION	04520	1
20	KEY, 403 WOODRUFF	04564	1
21	GEAR, HELICAL INPUT	04582	1
22	BEARING, UPPER GEARSHAFT	04542	2
23	GEAR, CLUSTER	04580	1
24	OUTPUT PINION GEARSHAFT	04521	1
25	KEY, SQUARE	04565	1
26	FORK, SHIFT	04510	1
27	PIN, SHIFT	04523	1
28	LEVER, SHIFT	04534	1
29	PIN, SPRING	04571	1
30	SPRING, COMPRESSION	04591	1
31	SHIFT DRIVE PIN	04524	1
32	LOCKWASHER, M5	04563	1
33	SHCS, M5-.8 X 35	04572	1
34	LABEL, SHIFT LEVER	04514	1
35	PHCRMS, M3-.5 X 5	045793	2
36	GASKET	04593	1
37	COVER, GEARCASE	04531	1
38	BEARING, LOWER ARMATURE	04543	1
39	FAN, ARMATURE	04590	1
40	ARMATURE 120V	04553	1
	ARMATURE 240V	04554	1
41	BEARING, UPPER ARMATURE	04544	1
42	WASHER, SPRING	04560	1
43	SHCS, M4-.7 X 60	04562	2
43A	CABLE CLAMP 1/8"	04585	1
44	LOCKWASHER, M4	04576	2
45	INSULATOR, SCREW	04557	4
46	FIELD 120V	04555	1
	FIELD 240V	04556	1
47	SLEEVE, FIELD INSULATOR	04558	1
48	FIELD CASE	04532	1
49	BRUSH HOLDER	04551	2
50	MOTOR BRUSH WITH CAPS	04550	1
51	SNAP BUSHING	04559	1
52	SSS, M5-.8 X 5	04579	2
53	TAG, MOTOR 120V	04512	1
	TAG, MOTOR 240V	04513	1
54	#2 X 3/16" DRIVE SCREW	045791	2
55	FIELD CASE COVER	04533	1
56	LOCKWASHER, M5	04563	4
57	SHCS, M5-8 X 60	04561	4
58	SHCS, M3-.5 X 6	045794	2
59	LABEL, DANGER	80027	1
60	INSULATOR, BRUSH LEAD	04578	2
61	CORD CHANNEL	0151453	1
-	14 OZ. GREASE	04587	1